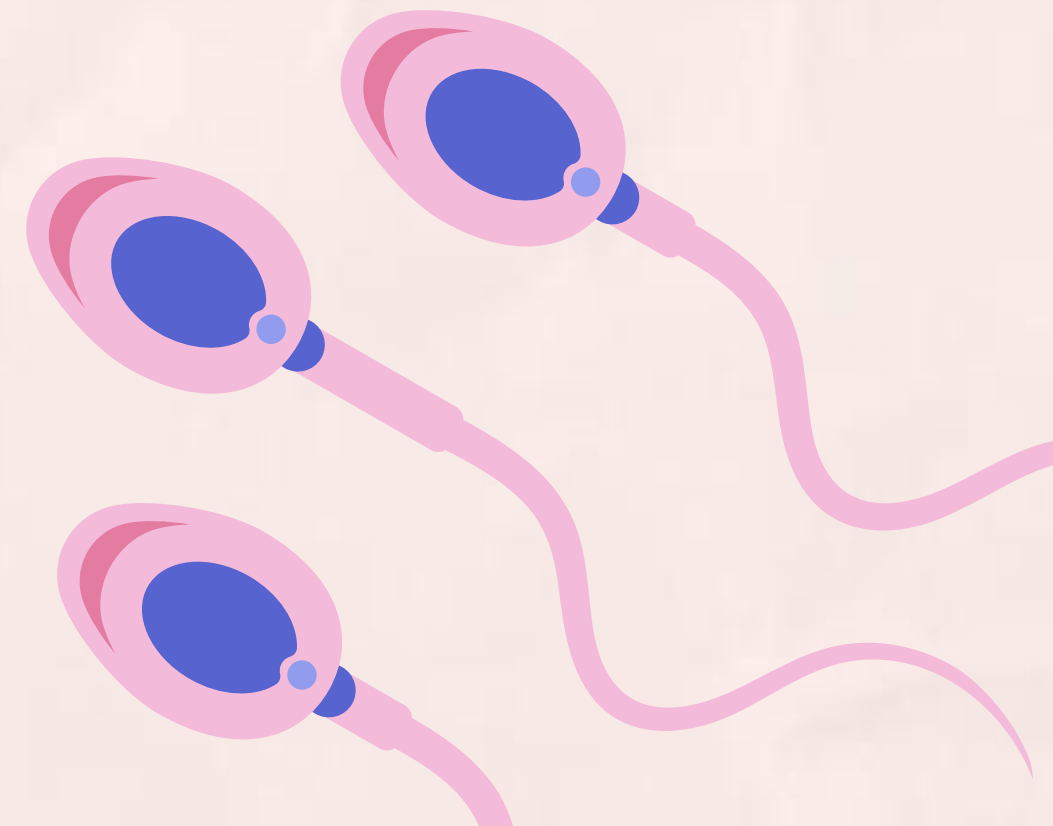
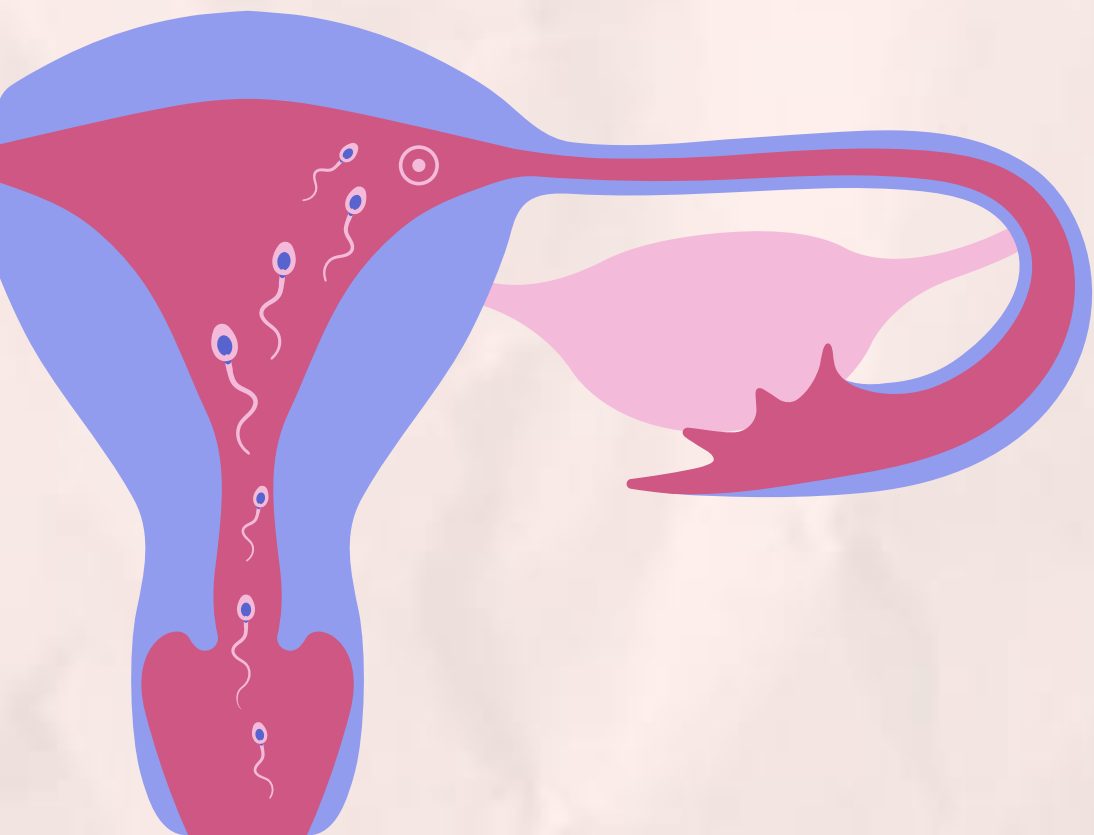
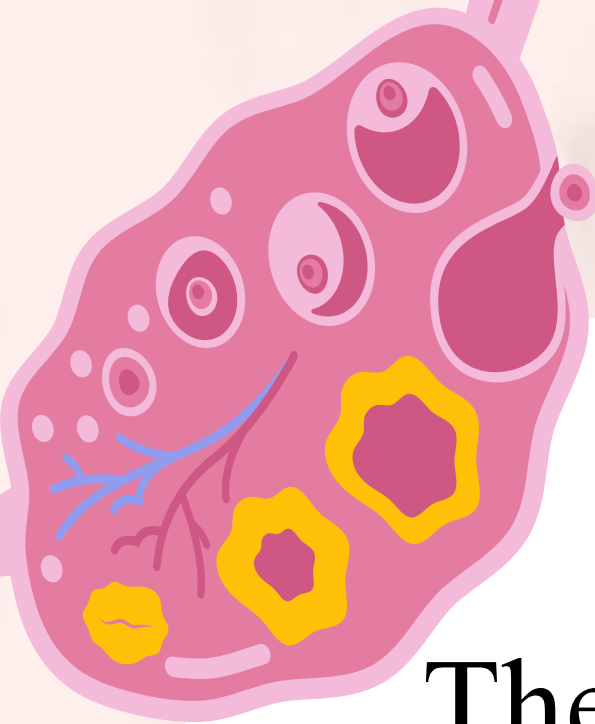




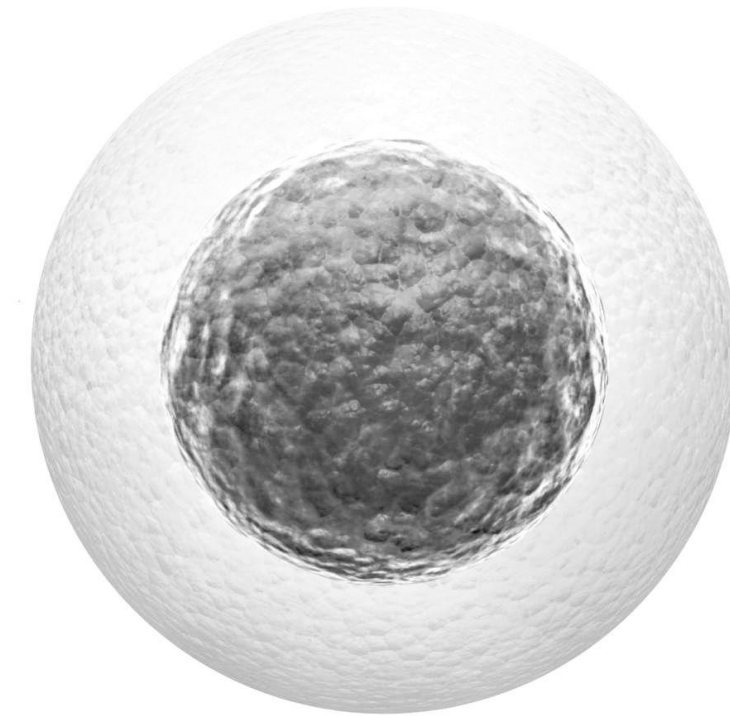
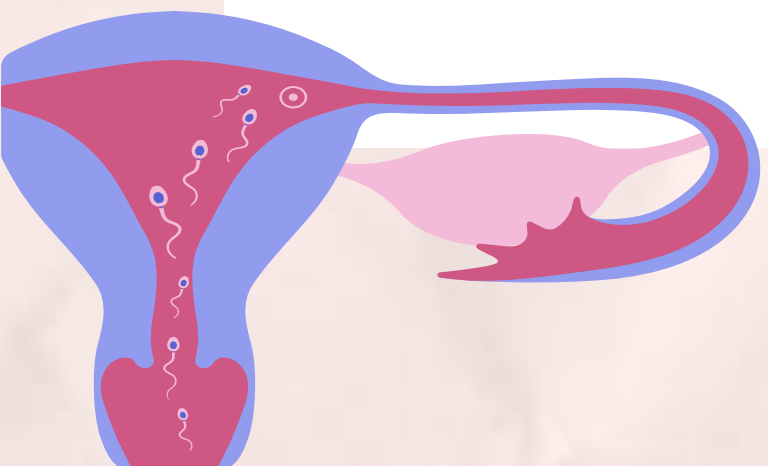
LESSON 9

Female Reproductive System




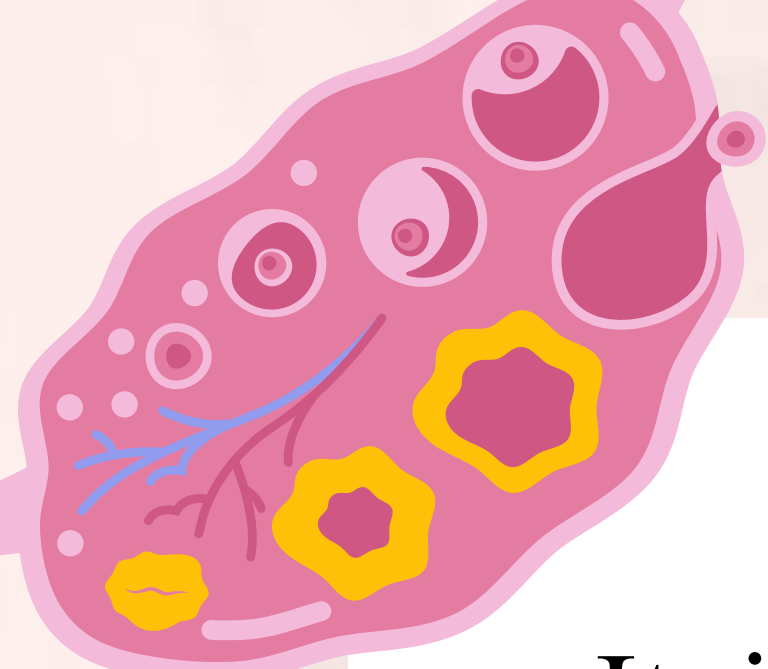


The female Reproductive system is made up of several organs which include the ovaries, fallopian tube, uterus, and vagina.


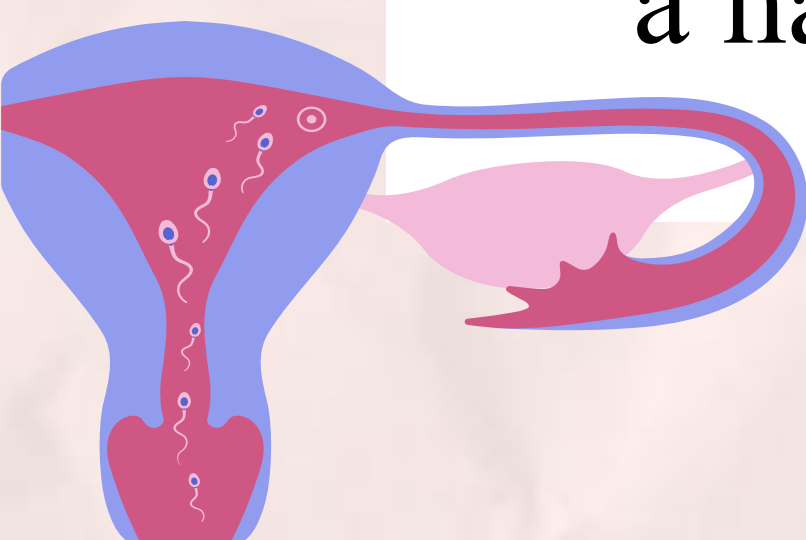


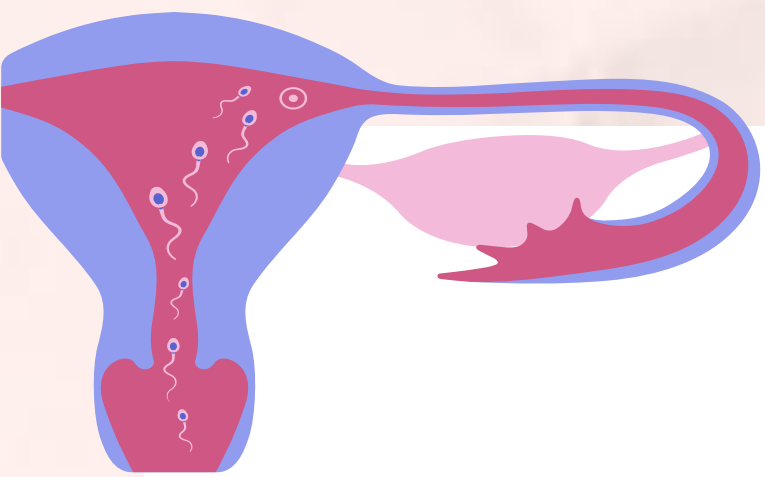
The egg cell in the female reproductive cell. This is the biggest cell in the female human body.





It is specifically responsible for producing egg cells and supporting a developing baby inside a mother's womb. The egg cell is only one-tenth of a millimeter, about the size of the diameter of a hair strand.

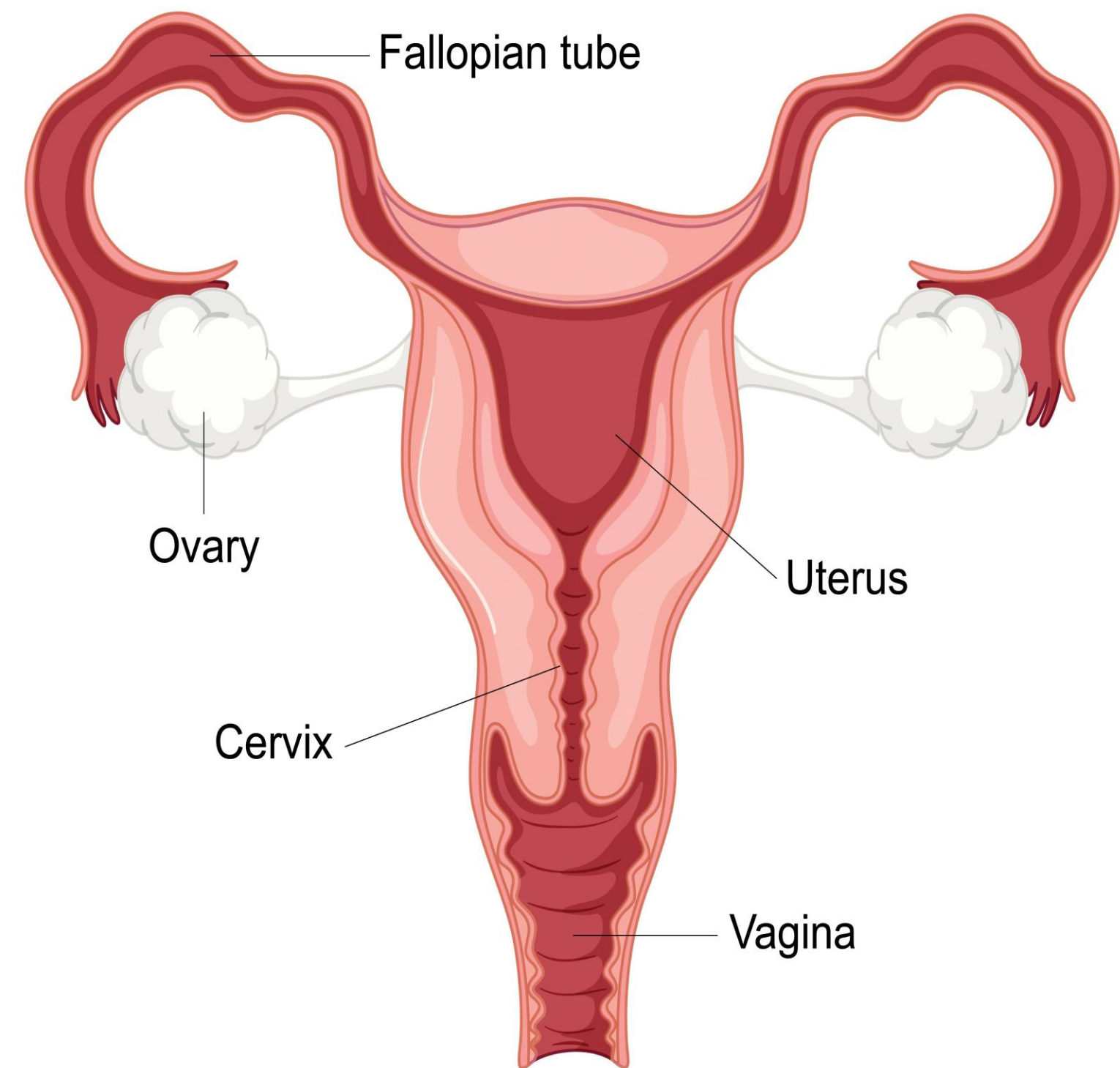


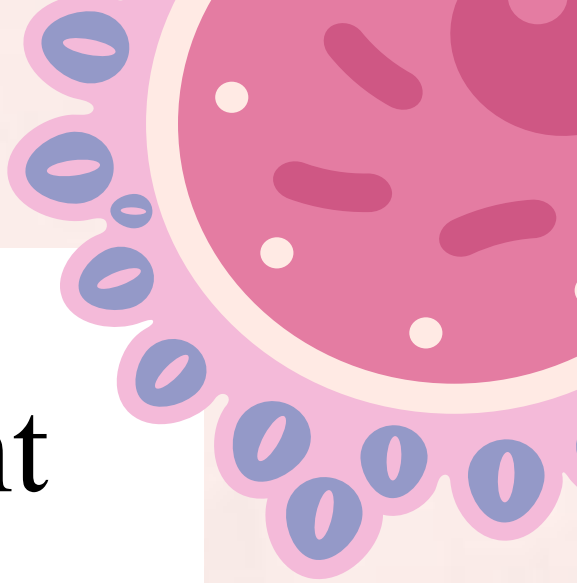
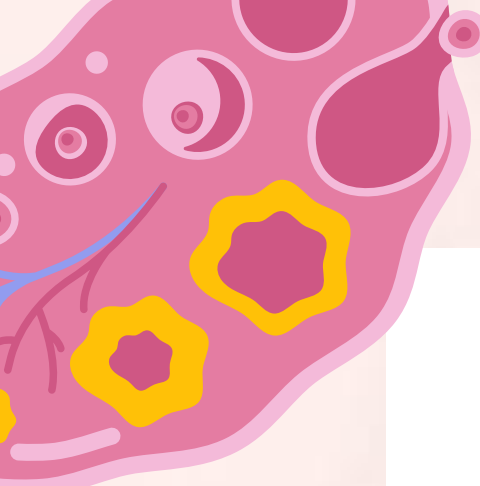


Ovary

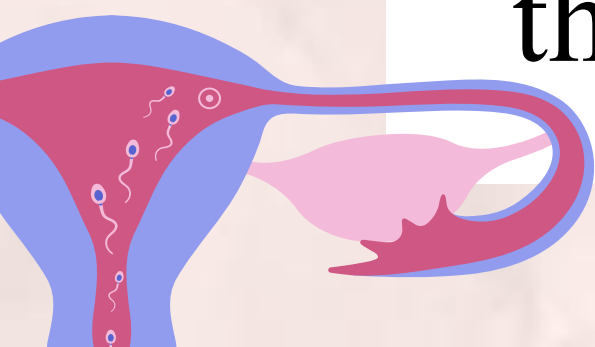
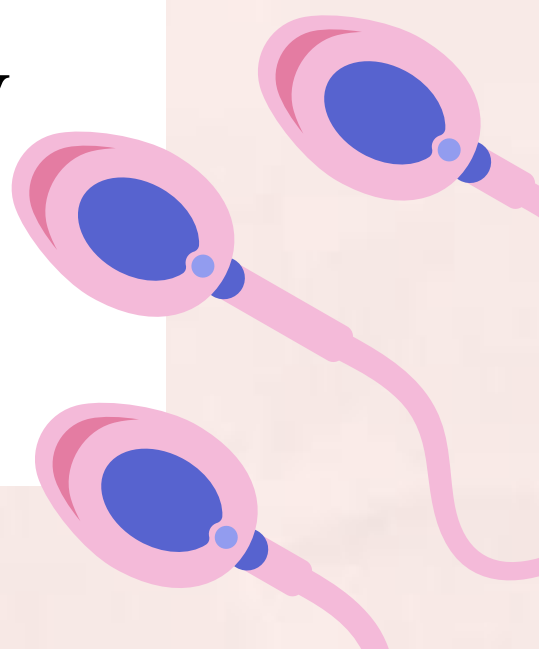
The ovary produce egg cells as well as the female sex hormones estrogen and progesterone.

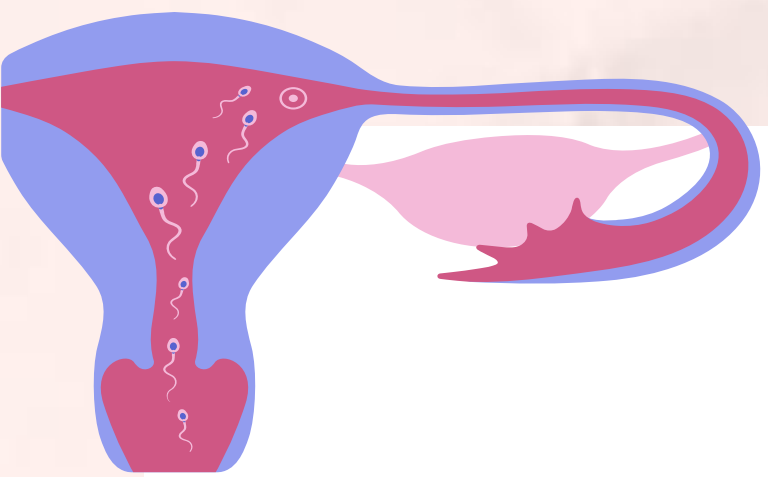
Female human has two ovaries.





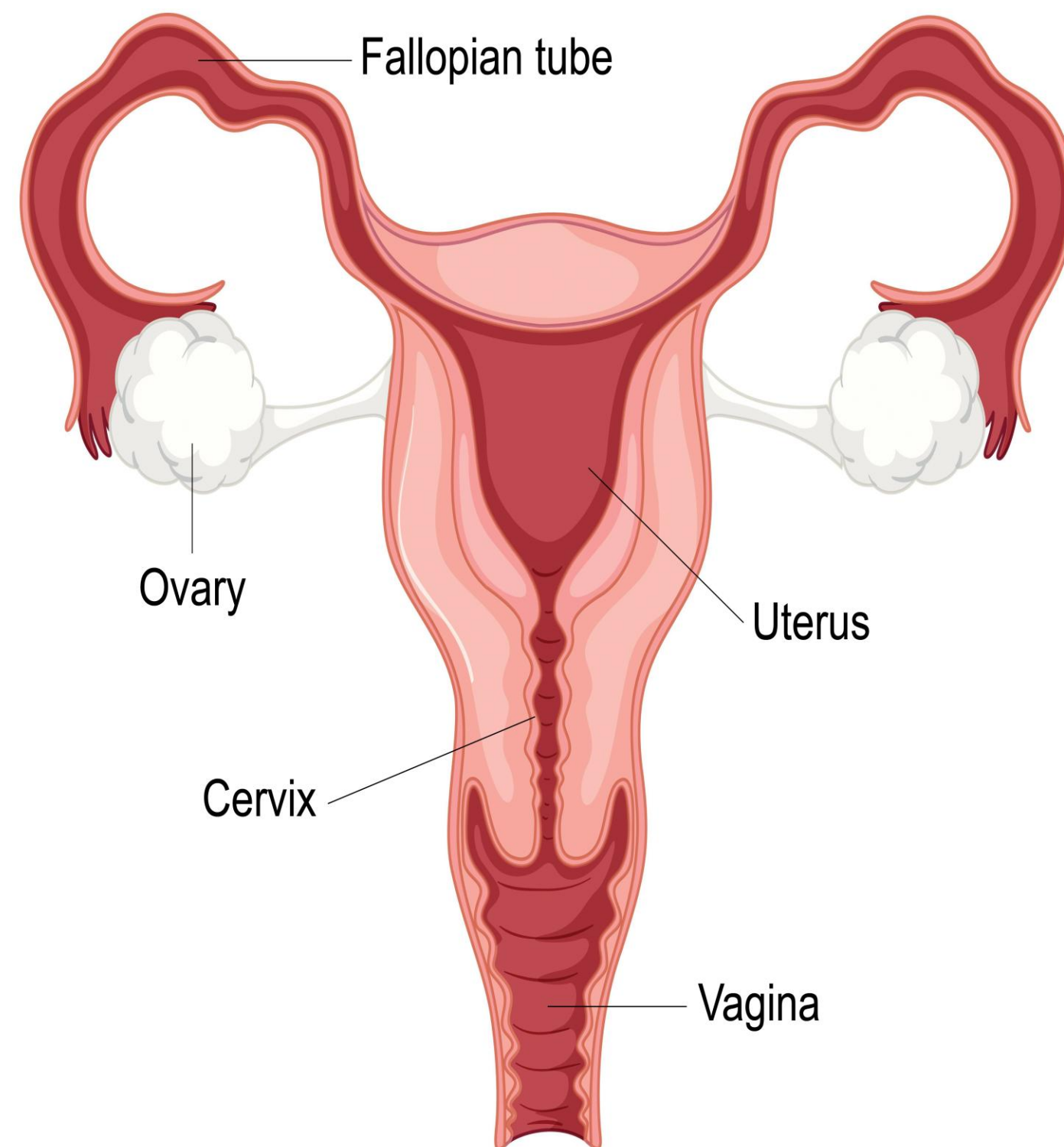
About 70,000 potential egg cells are already present in the ovaries of a female when she is born. However, only about 500 of these eggs will mature. The mature eggs are released one by one every month once the female reaches puberty and until she is 43-55 years old. The mature egg cell leaves the ovary through the fallopian tube.

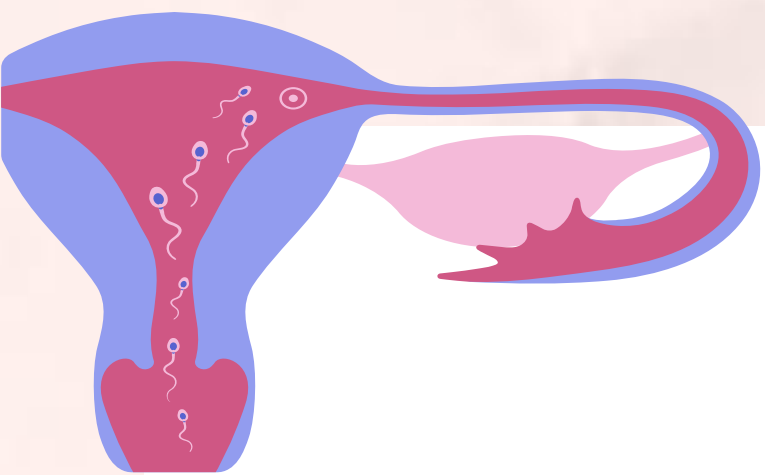




Fallopian Tube

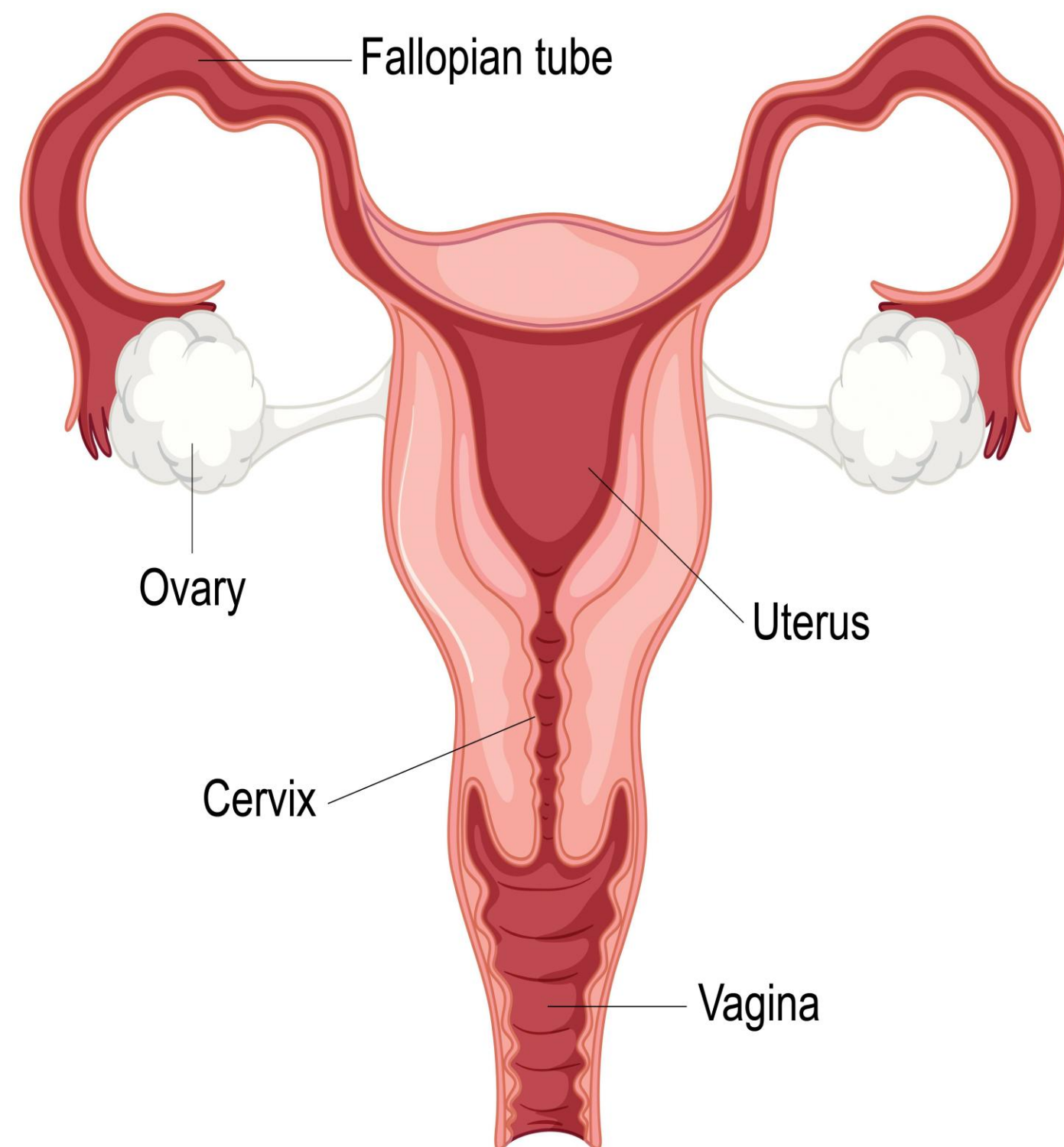
The fallopian tube leads the egg from the ovary to uterus. This is also the usual site of fertilization of the egg cell and sperm cell. Female human have two fallopian tubes, each connecting to an ovary to the side of uterus.


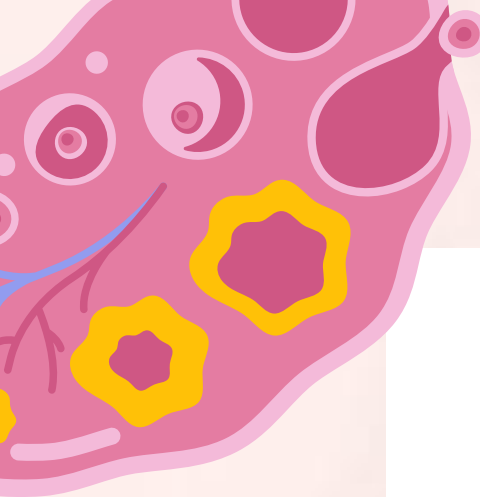




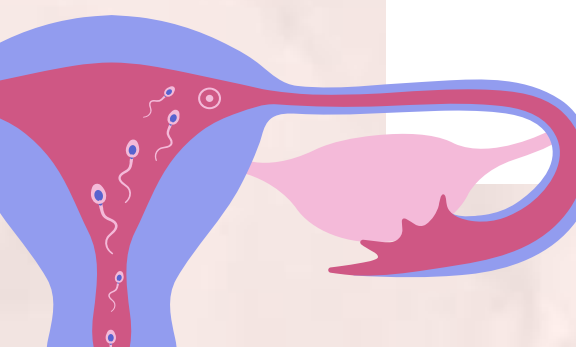

Uterus

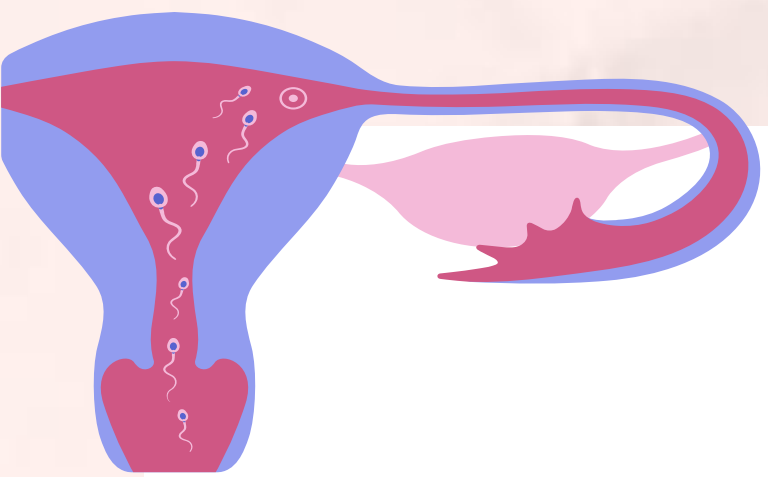
Also called the womb, the uterus is a hollow muscular organ located at the lower abdomen. It is a soft, smooth inner lining called the uterine lining or endometrium.





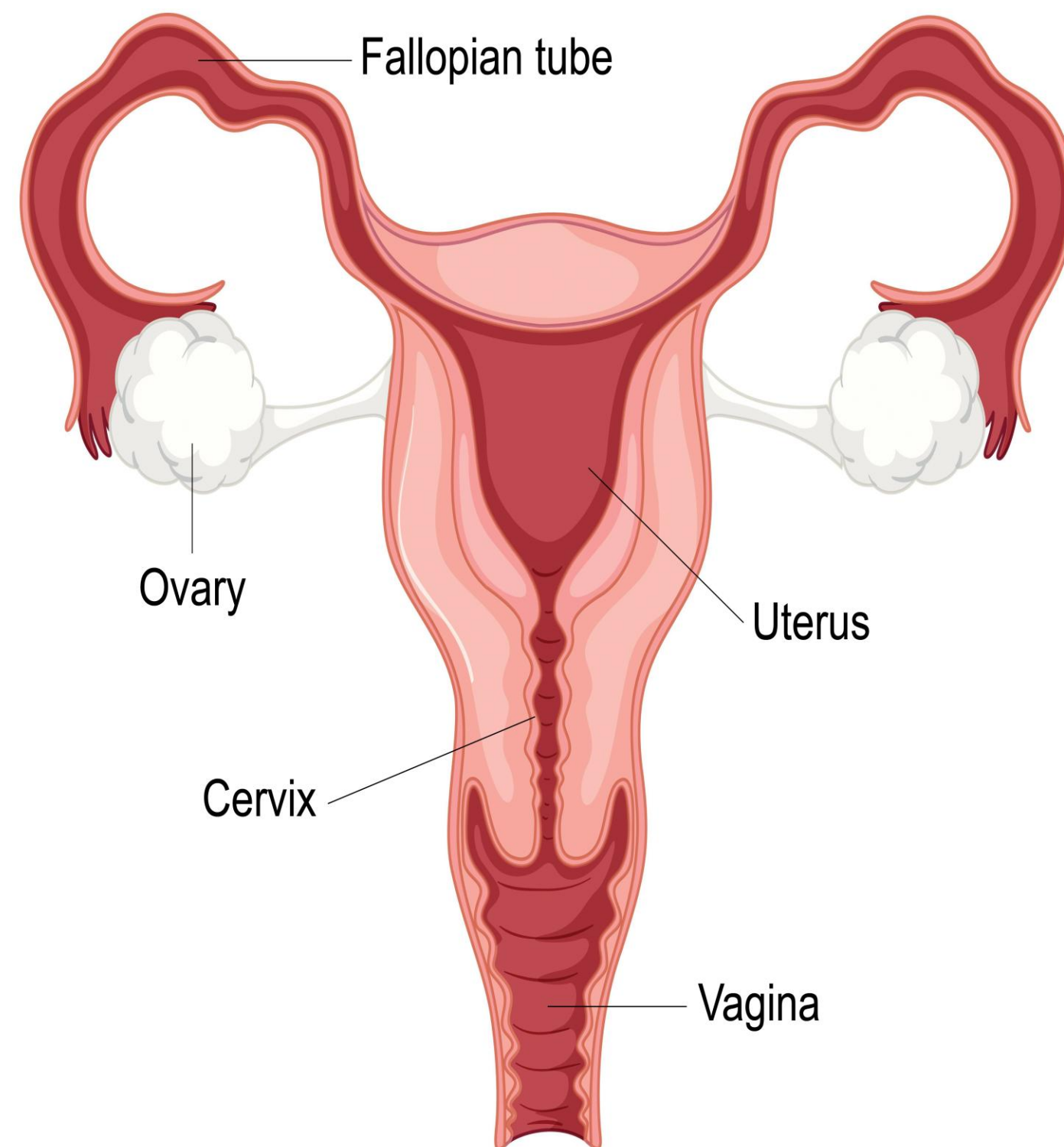
This lining becomes thicker as it accumulates blood and nutrients to accommodate the unborn baby as it develops. It is also the site where the fertilized egg is implanted. If the egg cell is not fertilized it, together with the uterine lining, it will break down and its discharged during menstruation.

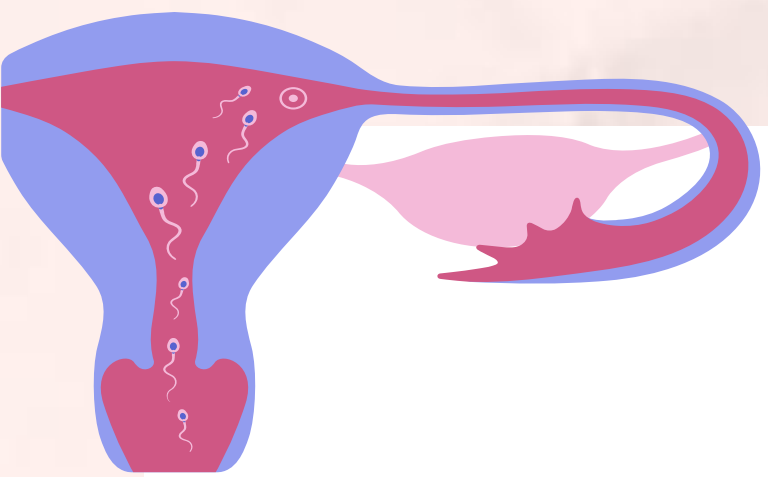




Cervix

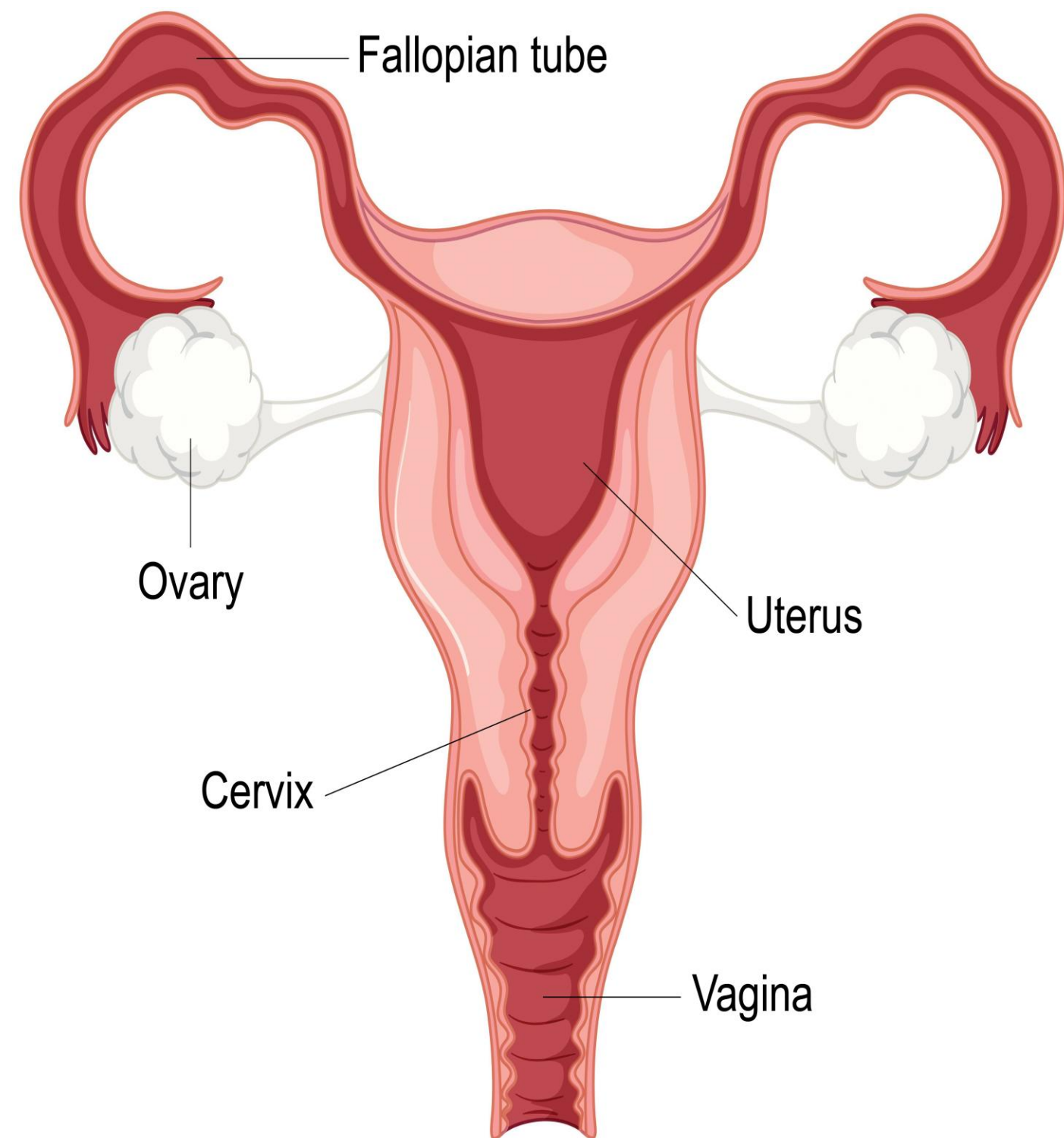
The cervix is located at the lower part of the uterus. It is a narrow opening between the uterus and the vagina. During child birth, it expands to allow the passage of the baby.





Vagina

Also called **birth canal**, the vagina is a hollow, muscular tube that extends from the cervix to the vaginal opening called **vulva**. It expands to let the baby pass during normal delivery.





END

Thank you

